

St. Mary with St Alban Teddington

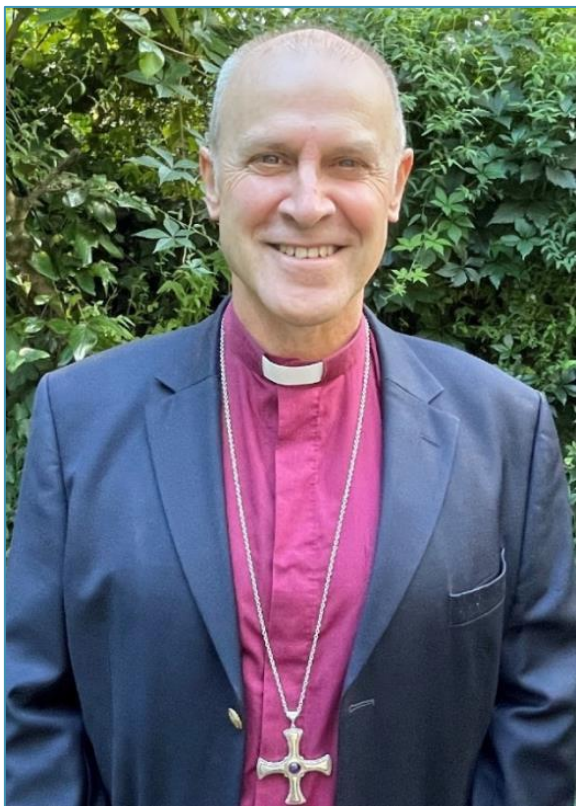


Welcome



StMARYwithStALBAN
PARISH CHURCH of TEDDINGTON

BISHOP'S WELCOME



St Mary with St Alban, Teddington is a significant parish within the Kensington Episcopal Area, where the church is deeply embedded within its wider neighbourhood. This parish provides an excellent opportunity for a priest who can offer a prayerful and Spirit-led vision for mission that will build on the Church's excellent existing connections within the wider community; who can develop its creative and innovative approach to mission and ministry; and who has a desire to make the love and life of Christ known in this attractive part of South-west London.

The Parish is seeking a vicar who is passionate for mission, who can articulate a strong theological understanding, and who can lead traditional but stimulating worship. There is a particular focus already in place around working with families, children and young people, which will need nurturing and building up. The next incumbent here will also need to be able to respond creatively and flexibly to the new opportunities presented by the *Building Anew* project.

Whilst this post is potentially suitable for someone seeking their first incumbency, the next vicar here will need to demonstrate some clear life-experience and wisdom, and the post may therefore also be attractive to an experienced priest looking for a fresh challenge.

The Diocese of London, and within it, the Kensington Area, is a supportive place in which to live and to minister. The Diocesan Strategy, 'Capital Vision 2030', emphasises the need for clergy well-being, alongside the broad ambitions of Confident Disciples, Compassionate Communities, and Creative Growth, all within a church that is seeking to become younger, safer, and more culturally diverse. There are good colleagues close by in neighbouring parishes, and Hampton Deanery and Chapter operate well with a sense of unity and missional direction, rooted in the church's core purposes of Worship and Witness Together.

The Rt Revd Dr Ric Thorpe
Acting Bishop of Kensington

INTRODUCTION

St Mary with St Alban in Teddington is a warm, welcoming and vibrant church at the heart of the local community. Through the services and events we hold, there are many opportunities to share the Gospel. Our Sunday worship is liturgical and eucharistic but we are also open to learn from other traditions and approaches to worship.

In recent years we have seen numerical growth, in particular in our children's ministry with pre-school age children, which has flourished with the introduction of a short, family-friendly service on a Sunday morning, and our Church Mice Toddler service on a Wednesday morning.

Our church building, situated very close to the river Thames, is loved by a wide range of people and is open every day of the week as a quiet space for prayer. We have just received planning permission for our *Building Anew*. Our next vicar will play a key role in this exciting project, to help us work towards ensuring that we have a place of worship that will serve the community through the years ahead.



Parishioners gather in our churchyard after Songs of Praise

We are looking for a priest who will bring energy and passion for the Gospel, who wants to develop our faith and enjoys teaching, and who has experience of leading a wide range of people and events. This role will suit someone who enjoys having a visible role in the community and interacting with a whole variety of people.

CONTENTS

BISHOP'S WELCOME	1
INTRODUCTION	2
SECTION 1: TEDDINGTON AND ITS COMMUNITY	4
The Parish	5
SECTION 2: LOOKING TO THE FUTURE	6
SECTION 3: THE PERSON WE'RE SEEKING	7
SECTION 4: OUR BUILDINGS	8
The Church	8
The Churchyard	9
The Parish Hall	9
The Parish Office	10
The Vicarage	10
SECTION 5: OUR RESOURCES	11
Finances	11
Staffing	11
Safeguarding	12
SECTION 6: WHAT WE ARE ABOUT	13
Our Worship	13
Growing Faith	15
Children and young people	16
Diversity and Inclusion	17
Sustainability	17
Social outreach	17
Arts and Culture	19
SECTION 7: BUILDING ANEW	20
SECTION 8: CONCLUSION	22
Acknowledgements	22
APPENDIX: COMMUNICATON	23
Church Suite	24

SECTION 1: TEDDINGTON AND ITS COMMUNITY

Teddington is a friendly suburb of south-west London in the borough of Richmond upon Thames.

It has the river Thames on one side and Bushy Park on the other. It is a wonderful place to live and work, with good schools and transport links, a small hospital providing a mix of services, an excellent variety of independent shops and small chain stores and plenty of green spaces. It has a strong community feel, with opportunities for culture, the arts and sport within easy reach.



We have an Arts Centre, and many active community groups, while Kingston, Twickenham and Richmond with their numerous retail and cultural facilities are close by.



The Teddington community gather to open the Sensory Garden

The Church makes active contributions to community activities, often in conjunction with other organizations such as the Royal British Legion, uniformed groups such as Scouts and Sea Cadets, the Teddington Society, the Royal Parks and the Royal National Lifeboat Institution.

St Mary with St Alban is at the eastern end of Teddington near the river. View our drone video to a get sense of this:

<https://youtu.be/nZ-dPd4ZRnM>

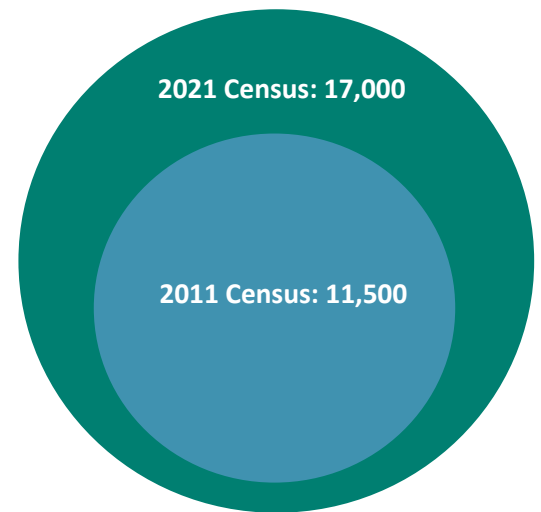
Growing in Faith and Friendship

The Parish

The population of the parish was around 11,500 in the 2011 census but population growth and a very recent significant change in parish boundaries have increased it to around 17,000.

The age profile is similar to the rest of England, rather than London. Teddington is less racially mixed than the rest of the borough. As a church, the social problems we most commonly experience are loneliness, mental health, and educational issues.

We have very close links to our church primary school in the parish, St Mary and St Peter's (SMSP), (see <https://www.smsponline.co.uk>). There is also a private primary school which uses the church for some services.



Pupils from SMSP outside the Church doing a project on biodiversity

Just outside the parish boundary there are three further primary schools and a co-educational secondary level school with academy status, as well as St Mary's University in Twickenham. In SMSP 12% of the 614 children do not have English as their first language although a proportion of those will have been born here. It was previously graded 'outstanding' by Ofsted. They did a new inspection in December 2022, and their report is awaited. It has as its vision 'to live out Jesus's promise of life in all its fullness'.

Slightly more than 20% of the parish population are 19 or under, with 18.2% over 65 years, and a recent 55% increase in the 70-74 age bracket. Many of these seem to be parents coming to live near their children and grandchildren.

We asked SMSP schoolchildren what they most hoped for in their new vicar. Here's what they said.



SECTION 2: LOOKING TO THE FUTURE

The church has been at the centre of Teddington life for 800 years, a focus for Christian witness and worship, a place to support people through life events, to provide comfort in difficult times and to give thanks when life is good.

As we move into the next period of our ministry, we want to continue to be a warm and welcoming church, celebrating diversity and inclusion, and open to everyone regardless of personal circumstance. In particular, we would like to strengthen our commitment to those who find life hard and are on the margins of our society. We aim to do this in our patterns of worship as well as through our existing outreach initiatives such as the Community Café, the Memory Café and the Bereavement Café, but we know that we can do more.

We hope that both our spiritual life and our community engagement will be enhanced by the completion of our *Building Anew* project, for which we have just received planning permission. This project provides an exciting opportunity to offer a hub within the church building for mission, pastoral care and more social activity with our varied congregations.

Every year we run a variety of courses and groups, both in church premises and in homes, including the Pilgrim series, Advent and Lent courses, Alpha, an on-line Bible study group and Growing Leaders. A priority for us is to continue to nurture the faith of our congregation, building our confidence to share the Gospel in all aspects of our lives, especially with those who do not currently come to church, whilst getting a better understanding of other faiths. We would like to restart our monthly Wholeness and Healing service, suspended during the Covid pandemic, and explore what combination of services best serves our Teddington community.

Music is an important part of our worship and our choir is flourishing. We would like to explore how our music might effectively engage younger people, recognising that traditional forms of worship do not always appeal to teenagers.

One of our key priorities is to find ways to attract and engage more children and young people in the life of the church.



We asked our congregation what they most valued about our church. Here are the most common themes.

SECTION 3: THE PERSON WE'RE SEEKING

We are looking for a priest who will come with enthusiasm and vision, to inspire and lead the parish into further growth and deeper local engagement. We would like someone who is able to build on the foundations already in place while also bringing us fresh ideas and opportunities, and who can work with the PCC to create a new Mission Action Plan that is linked to Capital Vision 2030.

Our new vicar will be supportive of our mainly traditional style of worship. Our services are liturgical and in the eucharistic tradition, with the presiding priest wearing appropriate vestments. But we are also keen to explore adjusting patterns and styles of worship, particularly in order to attract young people and those exploring the Christian faith.

We would like our next vicar to be a good listener, and someone who is able to share the good news of Jesus Christ with people from different backgrounds and a variety of life experiences. They will need to be active in engaging, supporting and managing lay people, enabling them to flourish as leaders in all areas of our ministry.

Our new vicar will play a key role in the next phase of the *Building Anew* project, working alongside our existing gifted and hard-working Governance Group through the construction phase and helping to inspire us to develop the ways in which we can make best use of these new facilities, once complete.

We are keen to work with our new vicar to find new practical ways to love and support people in Teddington and further afield. Our community connections are wide and varied. The Community, Memory, and Bereavement cafés and the Pastoral Visiting Team play a central role in giving compassionate support.

'Activate' has a base in the Parish, and we support its well-being programmes. In the past we have worked with the charity Glass Door, hosting a weekly night shelter in our parish hall, and it would be good to re-establish this sort of partnership. In addition, through ALMA www.almalink.org.uk we support Pemba in Northern Mozambique, a parish that has suffered several natural disasters, as well as insurgent attacks. There is a lot of scope here for more active engagement.

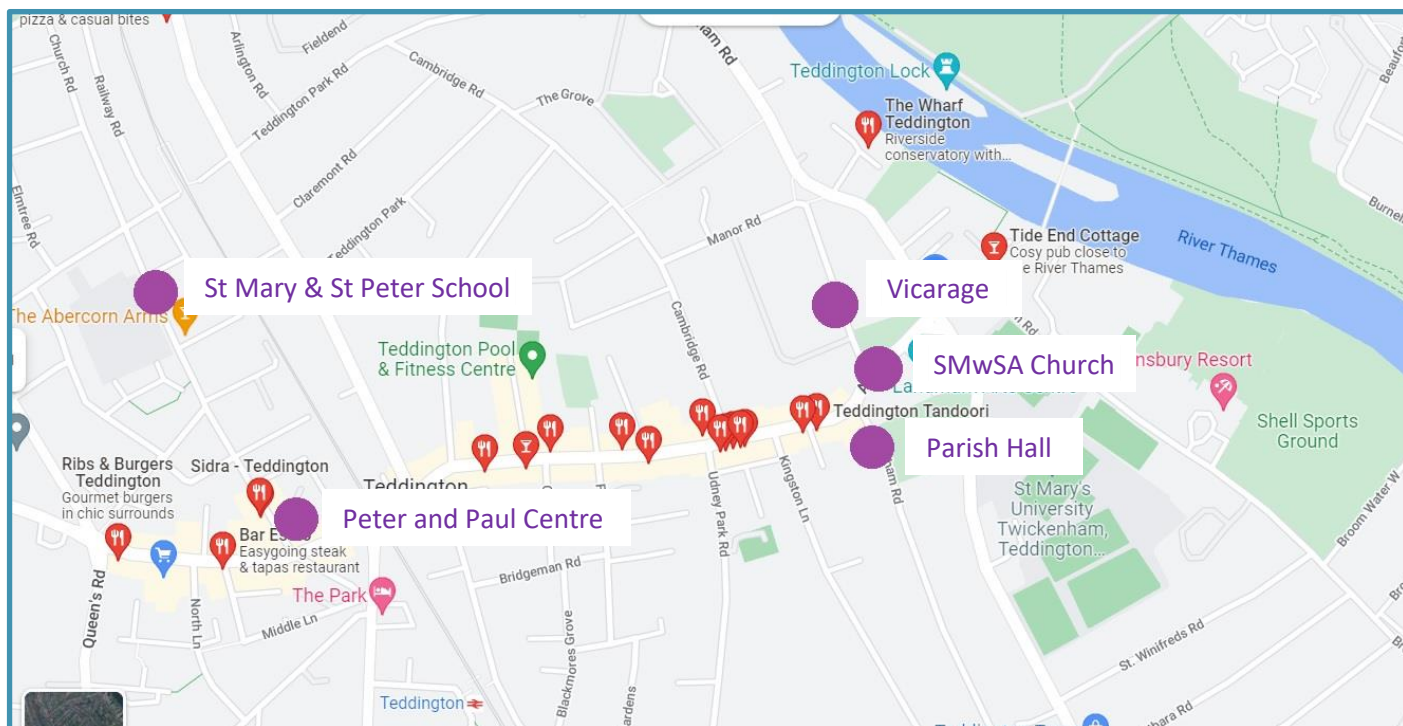
We would also like our new vicar to share the commitment within our church and local community to care for God's creation, which is enjoyed daily in our beautiful churchyard. Through the dedicated work of the Sustainability Group, we were awarded the A Rocha Bronze Award for sustainability, and we have begun working for our Silver Award.

Our congregation gave these as their most important qualities for our new vicar.



good listener
good preacher
visible and accessible
spiritually and mentally energetic
respecting tradition but innovative
empowering people
harnessing talents

SECTION 4: OUR BUILDINGS



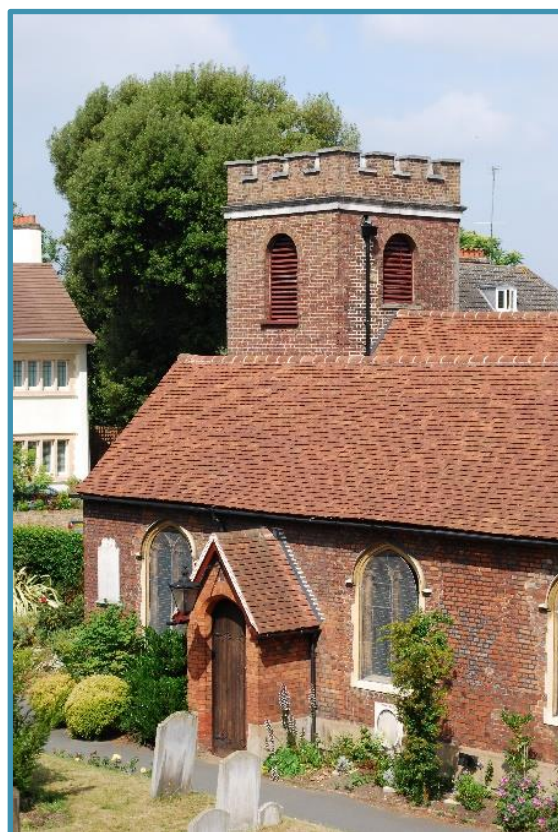
Map of our Church-related buildings in central Teddington

The Church

There has probably been a church on this site since the 13th century, but there is evidence on the current building from around 1560. Stephen Hales, as vicar for nearly 50 years in the 18th century, made significant additions, and further alterations were made in 1833 and 1877.

Due to the transfer of parish worship to the newly built St Alban's in the 1890s no further changes have been made to St Mary's, even after the closure of St Alban's in 1976. This has resulted in the present plan for development – *Building Anew* - in order to improve church facilities and provide extra space, toilets and catering facilities. More about this is in Section 7.

A group of volunteer 'Holy Dusters' clean the church every week.



Growing in Faith and Friendship

The Churchyard



A lovely churchyard surrounds the church, constituting one of Teddington's green spaces. The churchyard has high historical, aesthetic and communal value and was recognized to have 'exceptional significance' in a Conservation Management Plan completed in 2019.

The opening ceremony of our sensory garden in the churchyard

The Churchyard is cared for jointly by a team of volunteer 'Holy Gardeners' and Richmond Council. It has two beehives, two 'chatty benches' and a recently created Sensory Area. Three or four services are held in the churchyard every year, and we have a well-supported Adopt a Grave scheme.

The Parish Hall

Our parish hall, built in the 1890s and extensively modernised in the 1990s, is in Langham Road, the other side of the High Street to the Church. It is well used by our church, as well as for private and community activities. With both the large main hall and the smaller Mina Hogan Room available, hall hire is a major source of income.



Growing in Faith and Friendship

The Parish Office



The parish hall was revamped over 20 years ago, creating a communal office space on the top floor, with a separate Vicar's Office. It acts as a hub for the church and hall and is home to all the office staff and clergy team, as well as many volunteers. It is a very welcoming spot for all visitors and unplanned pop-ins.

The Vicarage

The vicarage is a double-fronted semi-detached six-bedroom house in Twickenham Road, part of the Teddington Lock conservation area. It is a very short walk from the church and has a well-tended garden and off-road parking. It was extensively refurbished in 2009 and is currently being fitted with double glazing.



SECTION 5: OUR RESOURCES

Finances

The financial situation of the church is overseen by the standing committee of the PCC. At the time of writing the finances are in a reasonable position with a 2022 income of £305,000 and expenditure of £356,000, including a loss on investments of £12,200, but Gift Aid of £15,800 expected. We have £250,000 on cash deposit and £130,000 in investments. These seemingly high reserves are in preparation for the *Building Anew* project.

The main sources of income are from Planned Giving and Gift Aid, with collections, donations and Hall income, now recovering from the effects of the Covid pandemic, making up the rest. 33% of expenditure is our enhanced payment to the Common Fund, with office costs, the associate vicar, hall and church maintenance costs and music making up the rest.

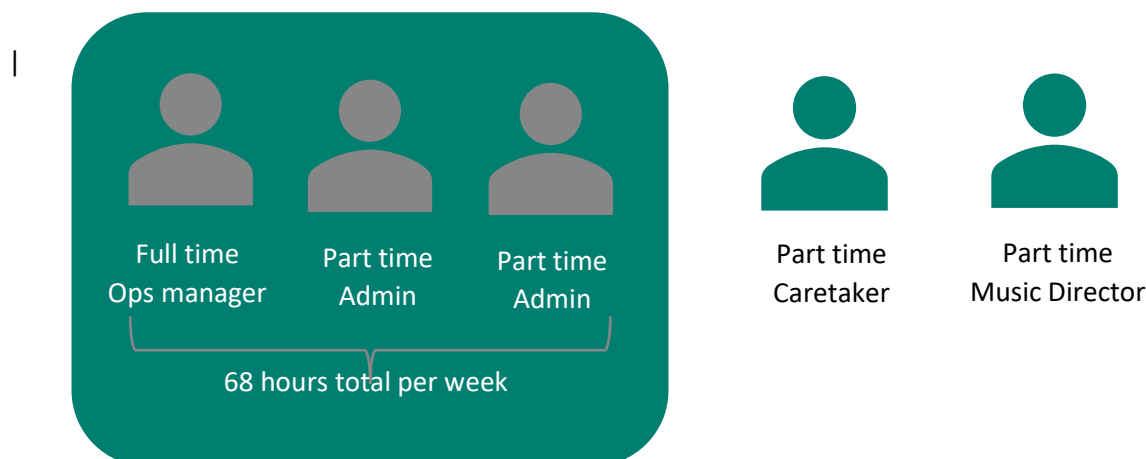
The main annual fund-raising activity is the Christmas Bazaar which raises around £5,000.

Staffing

The parish has a vicar, a part-time associate vicar (currently funded by the parish), one licensed non-stipendiary priest, and three priests with PTOs. It has been a training parish for two curates in recent years, and two members of the congregation are training for ordination. There are also strong links to the Pioneer Minister in Activate (see below).

There are two part-time administrators, and a full-time Operations Manager who work a total of 68 hours per week. This team has been built up over the past eight years as the Hall and Church became more active. Combined, the administrators manage all Hall bookings and invoicing plus the production of service sheets as well as Baptism and Wedding administration and parish communications, including the website, calendars and databases. See Appendix for more detail on communications.

A part-time caretaker helps with all maintenance and smooth running of hall bookings, and a cleaner comes once a week for a full clean. There is also a part-time Music Director.



Safeguarding

The PCC aims to promote a safer culture within our church and takes seriously its duty to keep from harm all who are welcomed to our church, especially children and vulnerable adults. The Safeguarding Policy is reviewed annually and the Parish Safeguarding Dashboard is used by the Safeguarding Officer to ensure that we are following correct procedures. This involves the safe recruitment of volunteers including safeguarding training at the appropriate level, and DBS checks where the role requires it. There is a small safeguarding team to assist and support the volunteer Safeguarding Officer.

SECTION 6: WHAT WE ARE ABOUT

Our Worship

Our pattern of worship is aimed at including all ages, and occasionally in venues other than the church itself.

The three main Services on Sunday are:

8.00am Said Communion (BCP) regularly attended by 12-15 people.

9.00am Morning Worship. An informal service aimed at families, with Holy Communion celebrated once a month, attended by 80-90 adults and children. This is followed by Coffee and Craft in the Parish Hall.

10.00am Sung Eucharist with Children's Church, usually attended by 70-90 people, followed by coffee in the Parish Hall.



A 9am Palm Sunday service



A typical 10am congregation

Festival services, often including uniformed organisations such as Scouts and Guides, attract congregations of 130-180, with major services much higher. Last Easter Day the number of people attending was 263, whilst on Christmas Eve and Christmas Day in 2022 1,160 adults and children worshipped in church. On Christmas Eve we run three consecutive identical crib services throughout the afternoon, reaching a total of about 600 adults and 200 children.

Morning and evening prayer is said on Zoom from Monday to Saturday, and all 10.00am Sunday services are live streamed.. <https://www.youtube.com/channel/UckzhqyCEIL7YHPCTfvlpNcg>).

There is an additional said Communion Service (Common Worship) on Wednesday mornings, followed by a weekly Church Mice Toddler Service which runs throughout the year except for August.

Growing in Faith and Friendship

Services are held regularly in local schools, and a residential home. Special annual services include the River Blessing Service which involves the local Lifeboat Station, and the processional Remembrance Service in November which takes place outside the hospital. Some services such as the Palm Sunday procession, the Easter Dawn service, and Loving your Burial ground week events are held in the churchyard.

We have a thriving **Baptism** Ministry, with services taking place at 12 noon most Sundays.



Our annual river blessing ceremony

In 2022, 64 baptisms took place, supported by members of the Parish Visiting Team. Church Mice and Sunday Morning Worship provide opportunities for families to continue contact with the church.



A special wedding

There have been 5 **weddings** last year. Couples are paired with another couple in the congregation who act as a point of contact and friendship and serve as welcomers on the day.

In 2022 our clergy conducted 20 **funerals** in Church, and some at local crematoria or cemeteries. Bereaved families are invited to the All Souls Service in November and the Longest Night Service at Christmas. A Bereavement Café meets twice a month at the Peter and Paul Centre.

The Church is open every day for private prayer, for visitors and for people to light a candle.

Growing Faith

We aim to help grow our faith by running regular courses, both in person and, since the Covid pandemic, also virtually. For example a Bible study group has been running online throughout the last year. In 2022 we took part in the Church of England's 'Living in Love and Faith' course. The previous vicar also ran occasional series of very well attended talks, the most recent of which was a series on the Bible. The popularity of these shows that there is a real appetite for learning and deepening our faith among people within the congregation and among the local community.



Parishioners gather for a supper talk in the Parish Hall

We also have a tradition of supper talks in the Parish Hall, where a talk is followed by an opportunity to discuss the subject over a meal. Two of the most recent talks/presentations, since Covid restrictions were lifted, have been on Sustainability, and a Film Night hosted by the Diversity and Inclusion group.

There is also the monthly First Wednesday Group, which meets to consider topics of interest and relevance, ranging from Celtic Christianity to 'Changing Attitudes to Mental Health' and another group meets regularly to study the religious poetry of Thomas Traherne, a curate here in the 17th century.

In 2020, a start was made at running a Lent group for the parents of children who come to Church Mice, but this had to be abandoned due to the Covid pandemic, and reviving it is one of our hopes for the future with a new vicar.

Other approaches to growing faith include Quiet Days, usually two a year. Before the Covid pandemic, we also had regular parish pilgrimages, including visits to Hereford, St Alban's and Salisbury cathedrals, as well as a pilgrimage to the Holy Land in 2018.

Building on a deanery initiative to create a new worshipping community locally, an Ecumenical Sport Ministry is being developed by a Diocesan funded initiative 'Activate', based at the newly created Teddington Mission Hub in the Peter and Paul Centre. Activate aims to promote well-being through activity, and greater missional outreach by the wider church. The Pioneer Minister is developing links with local youth and sports organisations (www.activatechurch.org.uk), whilst maintaining strong links with St Mary with St Alban. The new Vicar will be an ex-officio Trustee of 'Activate'.

Growing in Faith and Friendship

Children and young people

Morning Worship, our less formal form of Sunday Service, aimed particularly (but not exclusively) at young families, was launched in 2012 and has proved extremely successful with 30-40 parents and their children attending regularly. The service follows the pattern of the liturgy while being interactive and accessible. Holy Communion is celebrated once a month. Following the service, a Coffee and Craft session is held in the Parish Hall. A video of this service can be found on our site here <https://www.teddingtonparish.org/children-youth/childrens-ministry/>

Preschool children and their carers are also supported during the week, at Church Mice. This is a weekly interactive service with a story.



Church Mice in action



Children's Church explore the concept of faith

Older children are also encouraged to be servers, read the lesson and be involved with their parents in leading the intercessions. In the past we have had an active Youth Group but have found it difficult to find volunteers to help run it. This is an area of ministry we would like to start again. There are strong links with local schools, especially St Mary's and St Peter's C of E Primary School, where the vicar is an ex-officio governor. Services are also held for other local schools or young people's organizations in church or in their school, but we do struggle to translate these links into families becoming regular worshippers.



A discussion in the church with SMSP children

Growing in Faith and Friendship

Diversity and Inclusion

A church Diversity and Inclusion Group was formed a couple of years ago in response to local and international events, and inspired by books such as “Ghost Ship”. The group is small but active and is raising awareness of issues relating to diversity and inclusion, through displays in church, a Film Night, and a parish outing to a ‘Slavery and the City’ walk in central London. All those who prepare intercessions are asked to consider diversity in their prayers.

Sustainability

Sustainability is one of our key priorities and will grow in importance. In late 2020, driven by the impact of climate change, the need to care better for our community and the natural world, and the physical and mental health benefits of a sustainable community, the Parish formed a Sustainability Group made up of parishioners.



Our recent Sustainability Festival in motion

The Parish declared a Climate Emergency in 2020 and, since then, we have hosted supper talks around sustainability focused topics, formed a sustainability book club, and hosted the parish’s first Sustainability Festival in September 2022. The Parish hosted sustainability-focused services around the COP 26 conference in Glasgow in November 2021, as well as around World Earth Day.

The parish also made Fairtrade commitments and has been awarded the Fairtrade certification. In addition, a Bronze Eco Church Certificate from A Rocha was awarded in March 2022. We plan to continue to work towards the Eco Church Silver award, while also hosting sustainability-focused supper talks and book club meetings. In 2023 we will run our first Carbon Literacy training courses in the community, supporting community members to increase their sustainability, and climate change, knowledge. Finally, we plan to host our second sustainability festival in 2023.

Social outreach

Homelessness is not an obvious problem in Teddington, but we are aware that it is still an issue. In winter months we used to participate in Glass Door’s ‘Homeless Support in West London Churches’ (www.glassdoor.org.uk) through a Sunday night shelter in the Parish Hall. But since the Covid pandemic we have been providing help in cash or food.

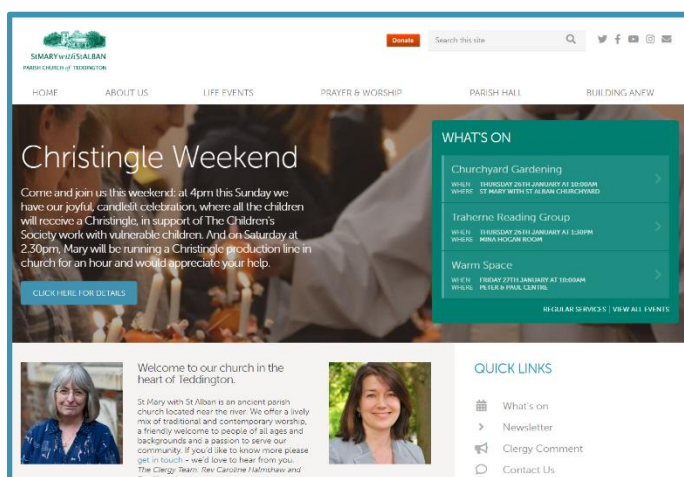
Growing in Faith and Friendship

In addition to our weekly cafés at the Peter and Paul Centre (PPC), regular coffee mornings and lunches are held in local venues, and there is always coffee after the two main Sunday Services, but we would like to restart our Men's Group.

The church has links with many local organisations and considers these crucial to creating a sense of community. It also supports the Teddington Society, a local amenity society, in events such as Teddington in Flower and the annual Summer Fete (www.teddingtonsociety.org.uk). Scouts, Guides, the Royal British Legion and the RNLI are all involved in services or events during the year.



The weekly community café



The Teddington Parish home page

The church ensures that the monthly newsletter is delivered by volunteers to all the households in the Parish. In it is a monthly diary, a list of regular services, and a collection of articles and information. The parish has a well-maintained website, www.teddingtonparish.org and is becoming ever more active on social media.

Churches Together in Teddington (CTT) often work to organise events such as the Christmas lunch, held at Ellera Hall, and the "Warm Spaces" programme hosted by a different church each day during the winter.

Arts and Culture

The church has had a choir for many years and has always enjoyed singing as part of worship. In the last few years the church appointed a part-time Director of Music with a broader remit than his predecessors. We are open to including music of greater variety to help attract, involve and retain younger people.

An ad- hoc orchestra provides support on special occasions, as do the group of Handbell Ringers



Our handbell ringers at the Christmas fair

The choir has about 15 regular members and other 'irregulars' who join for special occasions. We have a talented team of organists, and recently purchased '*The New Ancient and Modern Hymn Book*' with its combination of traditional and modern hymns. The choir always sings at the 10.00am Sunday Service, and about 3 times a year there is a Choral Evensong. From time to time St Mary's combines with other Teddington churches to put on large-scale concerts.

The **heritage** of the Church has recently been recorded by local volunteers, sponsored by the Arts Society Richmond and the Church Recording Society. The final published record, due later in 2023, will provide a nationally available reference for those interested in studying aspects of Church heritage.

The churchyard was surveyed in 2019 by the West Middlesex Family History Society and a copy of the document, with details of all graves, is kept in the church remembrance case.



'Plain and Pearl' are a very active group who meet regularly to knit, craft and create, and are always present at Parish functions. Attendees are a mix of congregation members and others from the local community.

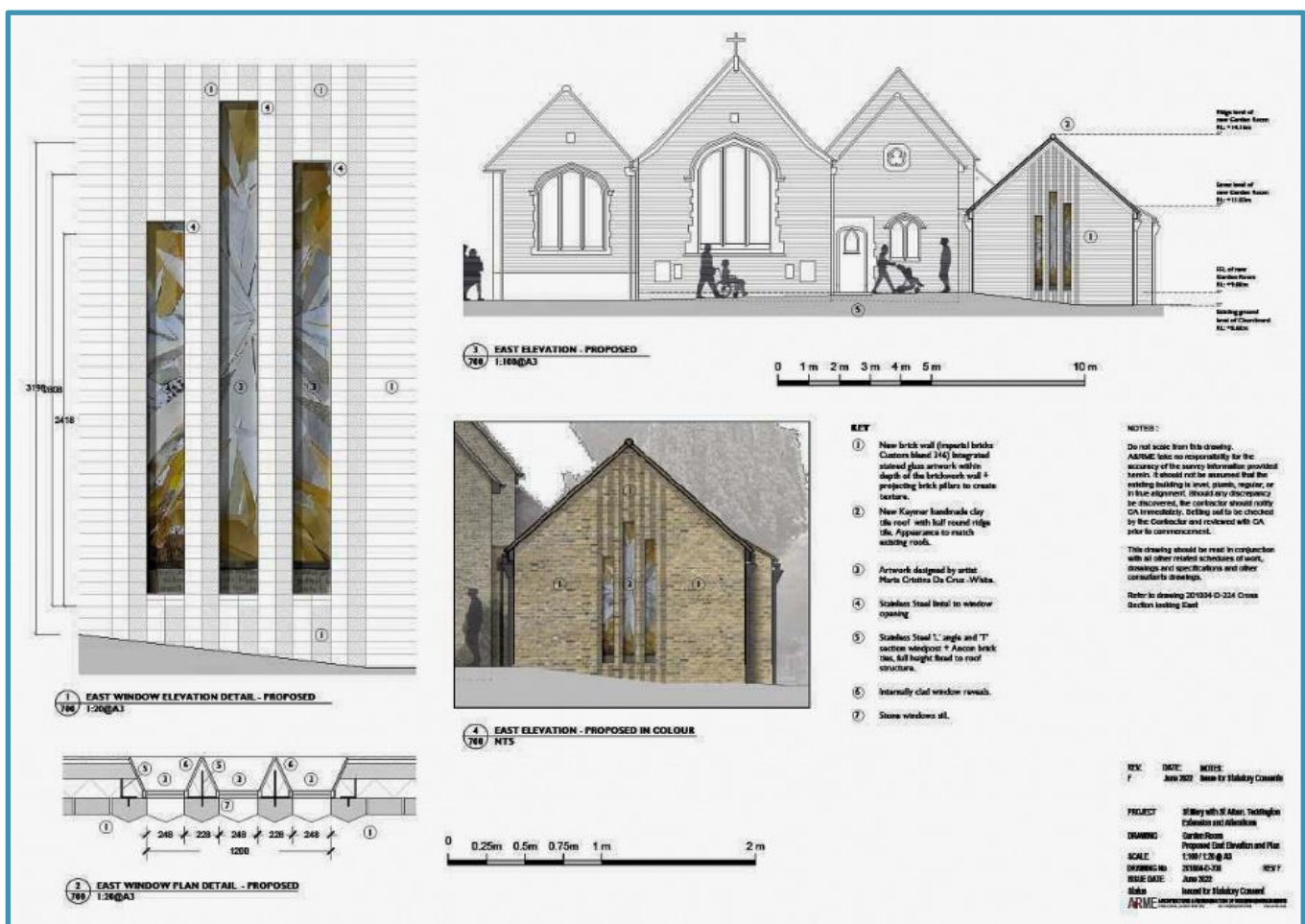
Among many other things, they created our beautiful knitted 'Knitivity', which is much used for storytelling at Church Mice.

SECTION 7: BUILDING ANEW

'Building Anew' is the project to equip our beautiful, historic Church with much-needed facilities. Currently the Church lacks toilets, catering facilities and separate space on site for Children's Church and other Church/community events. Since 2018, under the guidance of the PCC and Building Anew Governance Group, the Project Team has considered options, seeking expert input on all aspects. The scheme selected seeks to preserve the significant historic features of our Church, maximise the use of the existing space available and add a sympathetic, step-free extension on the north side of the Church in place of the existing Choir Vestry. This will contain:

- a multi-purpose gathering/meeting space with an integrated kitchenette – the 'Garden Room' – with large glass windows and an integrated contemporary glass artwork,
- a connection to the north aisle of the Church via a 'pentice' and a glass-walled passageway, fully accessible toilets, and direct access to the Churchyard on the south side.

To minimise size and disturbance to graves, and to contain costs, the proposed scheme includes re-ordering the northeast of the Church to make more efficient use of the existing footprint. The pipe organ, which is not high-quality and of negligible value, will be replaced by a digital organ.



Growing in Faith and Friendship

In summary, *Building Anew* is about making our contribution to the 800-year history of our church, which has been expanded and enhanced in every century, to make it fit for purpose:

- To offer a hospitable welcome to all who enter
- To be a sacred space that is accessible to all, regardless of disability or need
- To be a sustainable community resource where groups meet for fellowship
- To be the building we need to fulfil our vision to 'grow faith and friendship for all'

Following consultation with, and positive feedback from, the Diocese of London and Richmond Council, as well as our congregation and local community groups, the scheme was approved by the PCC in May 2022. In August 2022 a formal planning application was submitted to Richmond Council, and a request for statutory consent submitted to the Diocese of London.

In December 2022, Richmond Council granted planning permission. We are now excited to be beginning the next phase of the project, which will include a fund-raising campaign with a target of around £1.25 million. If everything goes smoothly we plan to start construction in 2024.

SECTION 8: CONCLUSION

This Parish is at an exciting time in its life. There is much to celebrate about what has been achieved but there are still challenges ahead. There is a large team of committed people who are excited at the prospect of working alongside a new vicar. Our hope is that this person will guide us as we seek to draw closer to God through worship and mission, and support us to deepen our prayer life and build our confidence to share our faith, so that together we can serve the wider Teddington community even better.



more awaydays
more inviting to our youth
more space to worship and gather
space for children to worship
grow our worshipping community
more outreach and social engagement
mixing the congregations

Here are a few snippets from our congregations on their hopes for the future of our church.

We hope very much that this parish profile has captured something of the heart of St Mary with St Alban, and that you are excited to join us and work with us on the next stage of our journey, growing faith and friendship for all.

Acknowledgements

With grateful thanks to Cathy Randall for her input on the style and her lay perspective, Sophie Edginton for her work on the format and photos, the Reverend Caroline Halmshaw for advice on the clergy perspective, Sue Stevens for compiling and editing, and to many members of the congregation and PCC for their contributions.

APPENDIX: COMMUNICATON

Communication with parishioners continues to develop with an active COMMS committee which meets regularly. Historically, from 1977 when St Mary with St Alban was recommissioned for full services the main communication was a monthly A4 black and white **newsletter**, written by the Vicar, printed locally, and distributed, free, to a gradually increasing number of local roads. The expense of printing was considered a cost-effective way of “spreading the word”. Over the last 45 years the print run has increased to over 5,600 A4 copies, produced in full colour with photographs; the coverage is (roughly speaking) every letterbox in the recently enlarged parish. It is still free and involves a band of about 75 volunteer deliverers. There are three editors who each edit 4 copies a year.

About 20 years ago the Vicar instituted a **weekly pew sheet**, with service details and notices, handed out to members of the Sunday congregations. As the Church was not open outside Service times this had limited “spread” value but was nevertheless a useful tool. It is still very much in operation, printed (A5) in the Parish Office and available at the back of Church throughout the following week.

In the last 10 years, communications have gone through a revolution and the Parish has been, and continues to be, up to date with using all aspects:

Website. In 2017, the teddingtonparish.org website was launched to provide a platform for news from both St Mary with St Alban and St Peter and St Paul. Following St Peter and St Paul becoming the Peter and Paul Centre, the website still carries news of both sites' activities. Editing of the website and liaison with the website development company is carried out on a voluntary basis, along with weekly support from the Operations and Comms Manager. The website provides detailed information on Church and streamed services, a range of social and prayer groups, hire of (and users of) the Church Hall and the Church's role in the various life events. Some website content is derived from the monthly Parish Newsletter; however it appears first on the website - the clergy and office teams, group leaders of various special interest groups and photographers tend to communicate weekly regarding updates required on the website. Updates are carried out as soon as possible.

Emailed Bulletin. Every two weeks there is a **Mailchimp ebuletin**, compiled by the Operations and Comms Manager, which is emailed to over 810 subscribers. This has the added advantage of reaching people who are connected with the parish but who live outside the Parish boundary and are therefore not in receipt of the printed newsletter.

During lockdown, when the Church building was closed, Services were held in gardens and front rooms and were both livestreamed and filmed, and available via our Church **YouTube Channel** and **Zoom**. Once services resumed in Church, the value of reaching a remote congregation was recognised. Gradually, after trial, error and use of borrowed equipment, a permanent audio-visual system was set up, purchased and installed and run by a small but dedicated and expert team of volunteers. Now many special events and all Sunday 10 am Services are available, live and later on demand, via our **YouTube Channel**.

Social Media. We run both Twitter and Facebook accounts, with a small team of three. This is an area that has been relatively dormant until recently, but we post more regularly now and are looking to re-start with Instagram too:

[facebook.com/Teddington Parish](https://facebook.com/Teddington_Parish) / twitter: [@TW11Parish](https://twitter.com/TW11Parish) / Instagram: [@teddingtonparish/](https://www.instagram.com/teddingtonparish/)

Church Suite

Most recently **ChurchSuite** has been set up to centralise and ease the running of all the **rotas** that are in operation – e.g. clergy, flower arrangers, welcomers, lesson readers, intercessors, coffee helpers. We plan to expand the use of additional ChurchSuite modules, and are currently trialing the calendars as well as event booking and payments.