



## our ambition

To equip our much loved church building with the facilities to be an inclusive sacred space and community resource, meeting both the needs of our congregation and of our community.



## Get Involved

let's build together

### HAVE YOUR SAY

Would you like to give your thoughts and ideas or to ask a question?

### VOLUNTEER

Can you offer skills, time or enthusiasm to planning, building and fundraising?

### DONATE

Can you offer financial support by donation, sponsorship, or by bringing forward a planned legacy?

For this, or to find out more email  
[future@stmarywithstalban.org](mailto:future@stmarywithstalban.org)

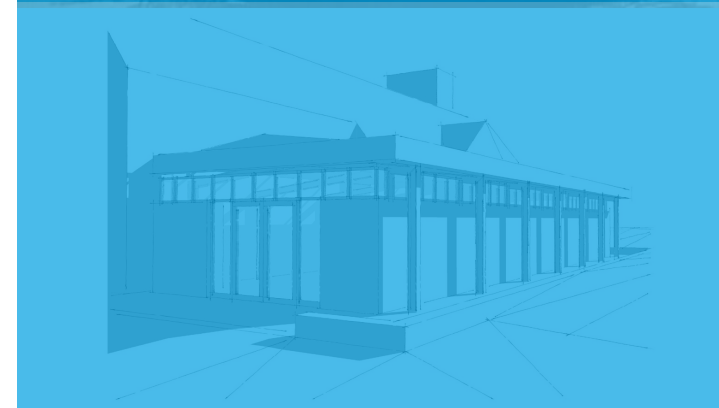
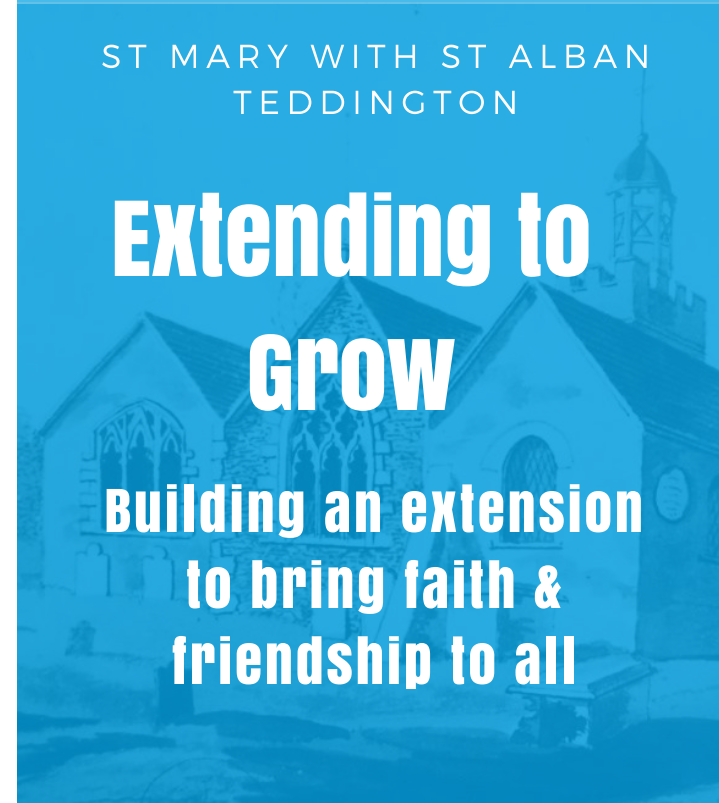
Or speak to the Vicar, Rev. Joe Moffatt  
[www.teddingtonparish.org](http://www.teddingtonparish.org)



ST MARY WITH ST ALBAN  
TEDDINGTON

## Extending to GROW

Building an extension  
to bring faith &  
friendship to all





# Rev. Joe Moffatt



We intend to build an extension on what could be called the 'hidden side' of our church.

It will make the whole church building fit for purpose: fit to be a sacred space that is accessible to all, regardless of disability or need; fit to offer a hospitable welcome to all who enter the door; fit to be a community resource where groups can meet for learning and fellowship; fit to be a centre for the arts, for concerts and for social interaction; fit to be the building we need to fulfil our vision to 'grow faith and friendship for all'.

So this is about more than just toilets. This is about making our contribution to the 800-year history of our church which has been added to every century. Every generation has done their bit to ensure the building is fit for purpose for their own particular time. We feel strongly that our task is to build an extension that will enable the whole church (both the building and the people) to bring faith and friendship to all.

## What will we build?

We will add a new extension behind the church, replacing the current choir vestry and creating more space.

It will be modest and modern, designed to sit with but not compete with the church.

It will provide much-needed toilets, a kitchen and a meeting room, as is the norm for every public building and church in the 21st century.

## How will we use it?

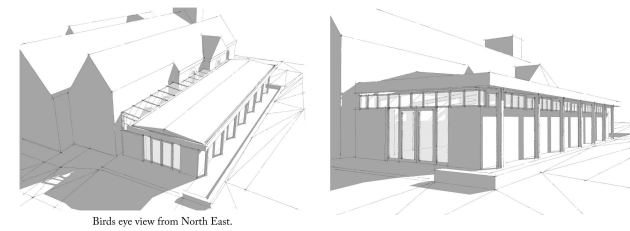
We'd love more ideas, here's the plan so far:

**Worship:** Children's Church, choir, prayer groups, after & between service hospitality.

**Learning:** School visits, group discussion, lectures, exhibitions, choral workshops.

**Fellowship:** Carer, addiction or grief support, memory cafe, art & music groups

## What will it look like?



## Questions - for detailed answers to many more FAQs, please see our website.

Q: Why can't we use the Parish Hall?

A: The hall is heavily used for very many things. With facilities we could accommodate more people and activities in the church itself. The hall toilets are also too far away for many people and across a very busy road.

Q: What will happen to the graves?

A: By careful surveying, we'll avoid disturbing most. Where that's unavoidable, these historic burials, with permission, will be moved with dignity and reburied with care.

Q: How much will it cost and how will we fund it?

A: The project cost is £650,000, which will be met by a combination of existing legacies, grant applications, local fundraising and congregational generosity.